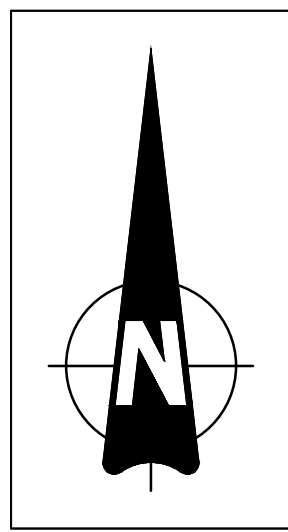


NOTES:

1. ALL COORDINATES ARE APPROXIMATE. DETAILED SURVEY TO BE DONE IN FUTURE IF NEEDED. CO-ORDINATES TO BE CONFIRMED ON SITE.
2. ALL STORMWATER DISCHARGE POINTS HAVE BEEN ESTIMATED FROM CONTOURS GENERATED FROM GOOGLE EARTH, DUE TO NO SURVEY DATA. ALL DISCHARGE POINTS ARE TO BE VERIFIED BY THE CONTRACTOR ON SITE, PRIOR TO CONSTRUCTION STARTING.

- ## NOTES:
1. ALL COORDINATES ARE APPROXIMATE. DETAILED SURVEY TO BE DONE IN FUTURE IF NEEDED. CO-ORDINATES TO BE CONFIRMED ON SITE.
 2. ALL STORMWATER DISCHARGE POINTS HAVE BEEN ESTIMATED FROM CONTOURS GENERATED FROM GOOGLE EARTH, DUE TO NO SURVEY DATA. ALL DISCHARGE POINTS ARE TO BE VERIFIED BY THE CONTRACTOR ON SITE, PRIOR TO CONSTRUCTION STARTING.

[illegible]

LEGEND:

 PROPOSED STORMWATER

LEGEND:

 PROPOSED STORMWATER

NOTES:

- NOTES:

CLIENT



education
Department:
Education
PROVINCE OF KWAZULU-NATAL



education
Department:
Education
PROVINCE OF KWAZULU-NATAL

<p>IMPLEMENTING AGENT</p>



CONSULTANT



Gauteng Office (Head Office)	
------------------------------	--

Gauteng Office (Head Office)
GladAfrica House, Hertford Office Park
90 Bekker Road, Vorna Valley, Midrand, 1686
P.O. Box 6723 Halfway House 1685

Gauteng Office (Head Office)
GladAfrica House, Hertford Office Park
90 Bekker Road, Vorna Valley, Midrand, 1686
P.O. Box 6723 Halfway House 1685
Tel: +27 11 312 2537/2584
Fax +27 11 805 1950
www.glad africa.com **Contact us** **glad africa@glad africa.com**

Gauteng Office (Head Office)
GladAfrica House, Hertford Office Park
90 Bekker Road, Vorna Valley, Midrand, 1686
P.O. Box 6723 Halfway House 1685
Tel: +27 11 312 2537/2584
Fax +27 11 805 1950
www.glad africa.com **Contact us** **glad africa@glad africa.com**

COPY RIGHT RESERVED
THE DUPLICATION OF THIS DRAWING IS
STRICTLY PROHIBITED

SHEET SIZE		SCALE	STATUS LEGEND	
A1	1:250		I = INFORMATION	D = DESIGN
			P = PRELIMINARY	CB = CONSTRUCTION
			T = TENDER	AB = AS BUILT
		NAME	SIGNATURE	PROFESSIONAL.REG
DRAWN	A. CLAASE			
DESIGNED	A. NGOMANI			
CHECKED	A. PADAYACHEE			2018300272

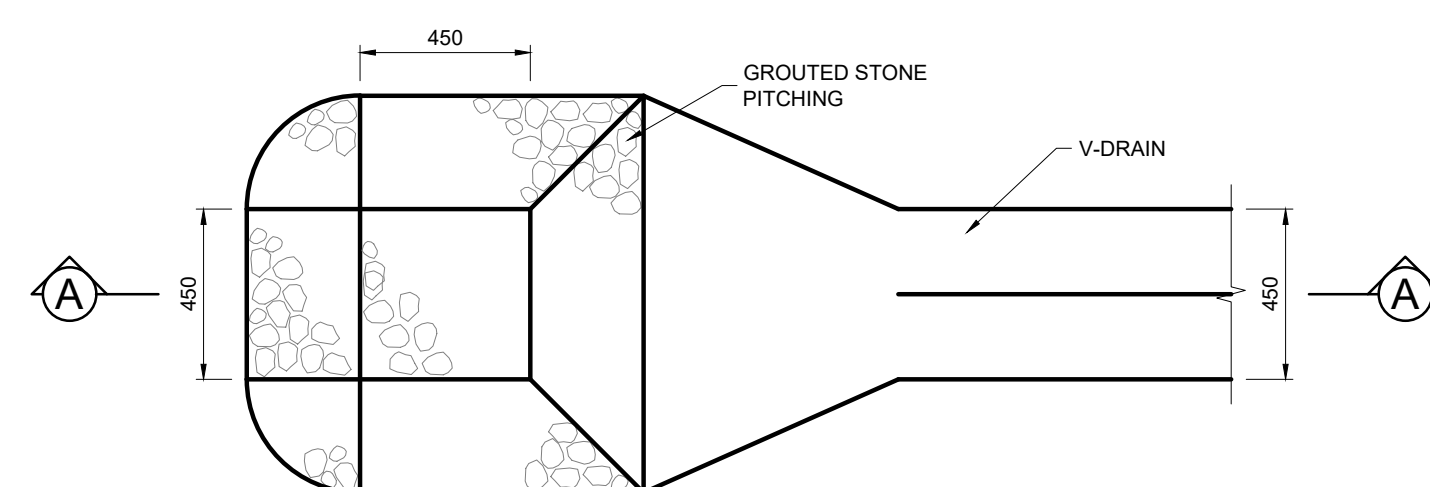
1	PROJECT DESCRIPTION
---	---------------------

	PROJECT DESCRIPTION
PROJECT	<p>KZN D.O.E INFRASTRUCTURE DEVELOPMENT AND MAINTENANCE PROGRAMME</p>

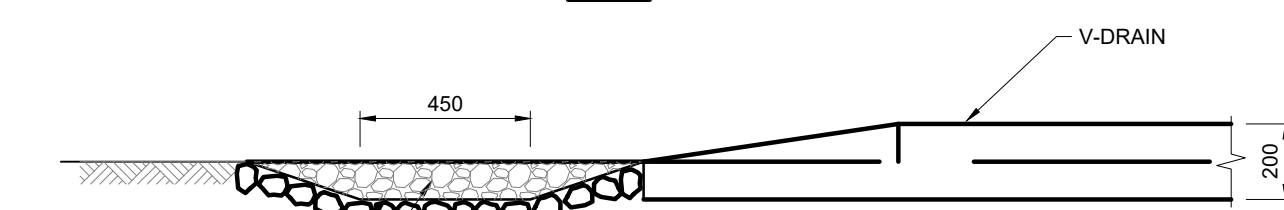
DRAWING TITLE	
---------------	--

DRAWING TITLE	
IMFIHLO PRIMARY SCHOOL STORMWATER CHANNEL LAYOUT	

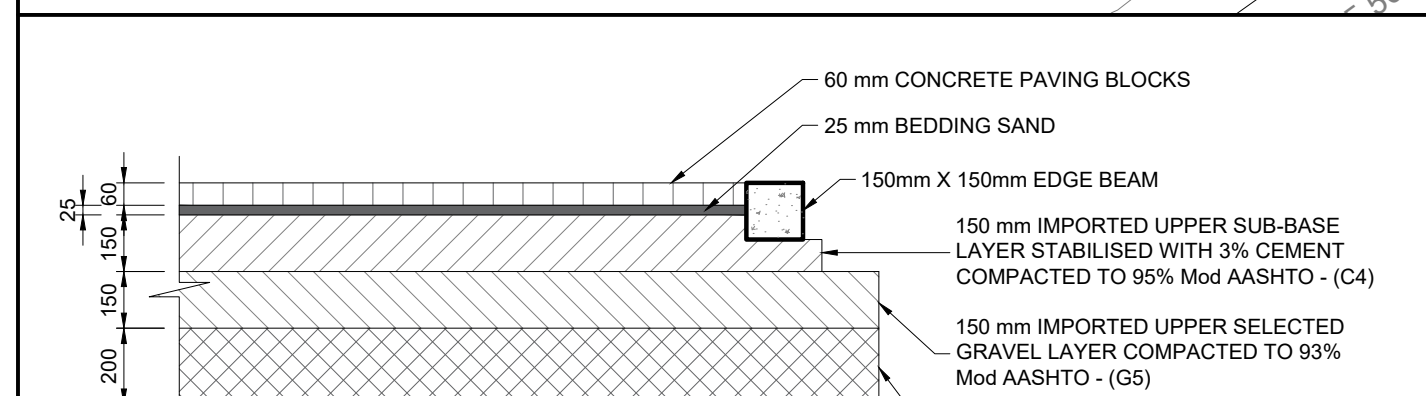
DISCIPLINE	DRAWING NUMBER	STATUS	REVISION
CIVIL	GAIC124-C-SW-005	T	A



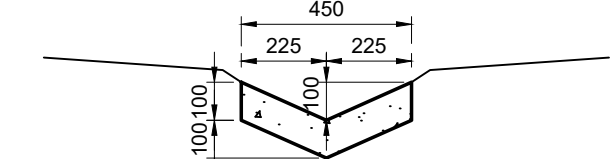
EROSION PROTECTION
PLAN VIEW
SCALE 1:20



EROSION PROTECTION
SECTION A-A
SCALE 1:20



BLOCK PAVING LAYERWORKS FOR WALKWAY AREAS



V-DRAIN TYPICAL SECTION



APPROVAL STATUS:		
FOR INFORMATION	<input type="checkbox"/>	TENDER <input checked="" type="checkbox"/>
PRELIMINARY	<input type="checkbox"/>	DESIGN <input type="checkbox"/>
		CONSTRUCTION AS BUILT

SUBMITTAL WAS REVIEWED FOR DESIGN CONFORMANCE AND GENERAL CONFORMANCE TO CONTRACT DOCUMENTS ONLY. THE SUBCONTRACTOR IS RESPONSIBLE FOR CONFIRMING ALL CORRELATING DIMENSIONS AT EXISTE FOR TOLERANCE, CLEARANCE, QUANTITIES, FABRICATION PROCESSES AND TECHNIQUES OF CONSTRUCTION, COORDINATION OF WORK WITH OTHER TRADES AND WILL COMPLY WITH CONTRACT DOCUMENTS.

NAME: **A.PADATYACHEE**

PR. NO: **20183000272**

DATE: **2022-10-03**

SIGNATURE: _____